

ESPHS *Bulletin* Postal History Auction #6

INSTRUCTIONS TO BIDDERS

Auction closes at Midnight, **August 15th**, 2013. Mailed Bid Sheets must be received at the Pinehurst P.O. in time to be delivered to my box by that day. Bid Sheets sent as attachments to e-mails must bear a Date/Time *before* August 16, 2013.

I will attempt to promptly confirm receipt of all Bid Sheets. I will send e-mails, or place a phone call if you provide a telephone number in place of your e-mail address.

Ask any questions, or request additional scans, as early as possible but not later than **August 10th** for reply by e-mail.

Fill out the Bid Sheet completely, and sign it. In the event you decide to change one or more bids later, be sure to mark the replacement Bid Sheet as such.

Auction Shipping Policy:

Lots will be carefully packaged and mailed to Winners by USPS First Class service and \$1 will be added to the total of each Winner's bids. If instructed on Winner's Bid Sheet to add Insurance or use a premium USPS service, the Actual Cost plus \$1 for materials will be added to the total of Winner's bids.

Lots marked with (*) will be sent flat (unfolded letters as consigned) and will bear a \$2 surcharge per lot, up to \$3 maximum to send 2 or more such lots, subject to the winner's instructions as above.

Bob Bramwell
PO Box 4150, Pinehurst NC 29374
rbramwell@nc.rr.com



Lot 1 WHITESTOWN (Oneida) C-30 on XF folded court document. 12½ rate to Albany. May 15 (1835). Min: \$7



Lot 2 Oct 27 (NYD) NEW-YORK DC-25 w. exquisite 6 bar killer. On #65. Fine envelope reduced left. Hinge remnants on reverse. Min: \$13



Lot 3 Perfect SUMMIT MOUNTAIN, NY (DPO-4; Ulster) on hotel adv. envelope to Venice, Italy. Mixed franking pays 5¢ UPU rate; full marks on verso. Min: \$24



(*) Lot 4 Sharp BROOKLYN (Kings) C-30 on XF FLS with sharp strike of scarce red 12½ rate. June 12 (1845) Min: \$20



Lot 5 Full RFD MADRID SPRINGS (St. Lawrence) S/L on 1907 card. Min: \$3



Lot 6 Clear ALBANY C-32 ties #26 to Aug 21 (1861) patriotic to Cohoes. Fragile paper has several splits. Min: \$40



(*) Lot 7 XF TROY (Rensselaer) 2cts. Integral drop rate C-32 on fine FLS. Seal removed 3 words only. Min: \$25



Lot 8 VF adv. poster stamp cover shown in Art Groten's article, p.18 March 2013 **Excelsior**. NEW YORK 1879 cds duplex with 21 ellipse killer. Min: \$24



Lot 9 Clear AUBURN (Cayuga) flag cancel machine May 10 1908 on corner card envelope of *The Osborne House*. Slight toning, o/wise good. Min: \$3



Lot 10 Legible LONG ISLAND CITY C-24 (Queens) w. cork killer on #147 to NYC. Elaborate monogram on reverse of mid-size stationery. Min: \$3



(*) Lot 11 Complete, well-struck May 12 SCHOHARIE, CH. NY. datelined 1841 w. PAID stamp, blue 6 and ms Paid 6. FLS has small separation repaired with archival tape; seal removal affects one word. Cat. Value \$175. Min: \$75



Lot 12 Last Day of Service Jun 29 1935 BRASIE CORNERS (St. Lawrence). #706 pays 3rd Class Single Piece rate. Min: \$3



Lot 13 2 damaged covers with DPO-1 manuscripts. FORT MILLER (Washington) 1802-1966 with #25 and RICHFIELD (Otsego) 1830-1933 with #11A. Min: \$35



Lot 14 Legible CAMDEN (Oneida) C-32 of Jun 28 (1852) w. ms 5 on interbank

form letter protesting non-payment, sent post unpaid. Min: \$7



Lot 15 Neat blue attorney corner card w. 1908 strike of BUFFALO International Postal Supply machine to Dresden. #304 pays 5¢ UPU rate to Germany. Clear Dresden postmark on reverse; flap removed. Min: \$4.50



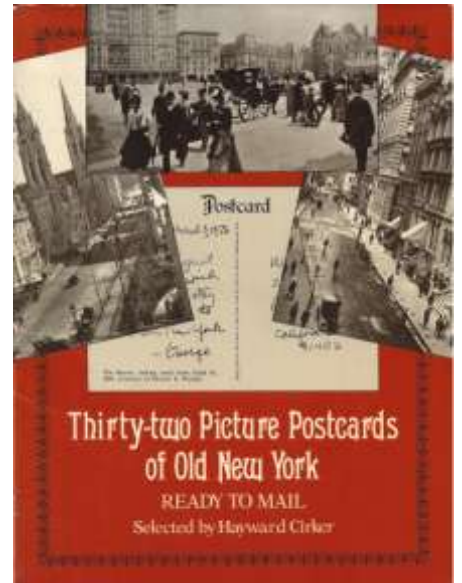
Lot 16 BROOKLYN, NY FT. HAMILTON STA. machine ties #616 to Medford, NY Env. Reduced at left with central file fold. Cat. \$20; Min: \$8



Lot 17 Clear ASTORIA (Queens) C-25 duplex on 1882 cover to Virginia. DPO-2 (1842-1888). New York transit and Lynchburg Va. Rec'd on reverse. Min: \$13



Lot 18 1896 JAMESTOWN C-27 with duplexed target ellipse ties #252 to neat all-over advertising cover. Sliced open at left with small tear. Min: \$15



Lot 19 Bound and complete offering of 32 sepia duotone scenes of NYC on post cards. Scenes include famous buildings, trains & trolleys, horses & buggies. Booklet measures 8 1/4" by 11" and will be sent flat, with extra postage graciously paid by consignor. Min: \$20



Lot 20 Doctor's C/C franked with Q2 paying 2¢ letter rate to Hammondspport bears SENECA FALLS (Seneca) 1914 International machiner. Min: \$3



Lot 21 Spanish American War patriotic from New York (Station S). Colorful Trans-Miss franking on XF cover. Min: \$12



Lot 25 19113 NEW YORK STA. H tie Q1 pair to Hammondsport. Return address on back flap. Min: \$4



(*) Lot 30 Court doc. sent by attorney from ESPERANCE (Montgomery) to Albany June 24 (1842). Ms. Paid 6. Very good condition. Min: \$50



Lot 22 1915 Int'l machine CORTLAND double strike on C/C of *The Messenger* sent Spl. Del. To Hammondsport. Impressive PREPAID hand stamp. RPO h/s on reverse. Several faults but over all good cover. Cat. \$55.50 Min: \$30



(*) Lot 26 OVID NEW YORK (Seneca) DO of Aug 15 (1832)– ASCC listing copy. Signed Free by PM Gibbs with "Excess Paid 50". Very nice FLS. Min: \$75



Lot 31 Columbia machine device used in HEMPSTEAD (Nassau). 3¢ purple pays war surcharge rate. Min: \$3



Lot 23 1¢ drop rate letter bears light but legible MORAVIA (Cayuga) C-25 with exquisite "sand dollar" cancel. Hinge remnants, otherwise fine. Min: \$3



Lot 27 1909 ROME (Oneida) Universal machine on handsome adv. c/c with Whitney Point receiver on verso. Min: \$6



Lot 32 Manuscript Lairdsville / NY July 16 (1850) FLS enclosed \$5 for legal case Min: \$22



Lot 24 RDF uptake to GREENVILLE (Green) on 1908 p/c. Faint DORMANTVILLE postmark upon arrival. Min: \$3



Lot 28 Dec 21 (1845) CLINTON C-30 (Oneida) on preprinted invitation to an *Agricultural Ride and Supper*. Min: \$7



Lot 33 Rensselaer County 14 cover variety pack from John Nunes' estate for the benefit of ESPHS. Seven post offices from Berlin to Walloomsac, including a 19th century run of Troy. Condition is OK to VF with some nice markings. There is content in half these FLS's & covers. Min: \$35



Lot 29 Fine 1882 SOUTH SYRACUSE (Onondaga) duples on small ladies cover to Pompey. DPO-4. Min: \$4